

# Automatic High Speed Hand Dryer

Operation Instruction

**Dear customer:**

**Thanks for your purchase. Please read these instructions before installation and keep it for installation and usage or any other further reference.**

## Features:

---

1. It is equipped with an automatic infrared ray induction system, very easy to use, reducing waste, and no touching, which effectively avoids pathogen cross infection and re-contamination.
2. It has outstanding performance with most advantage chip control technology and infrared sensor.
3. It has unified high speed motor with RPM of 24,000.
4. This series product comes with over current protection, which effectively eliminates accidents.
5. Easy to install. It is suitable for all departments in hospitals, school, food and pharmaceutical manufacturers, airports, office buildings, hotels, government agencies and research institutions and other places.

## Technical parameters:

---

Rated Voltage	AC220-240V <input type="checkbox"/>	Waterproof Grade	IPX1
	AC110V <input type="checkbox"/>		
Rated Frequency	50/60HZ	Air Speed	90m/s
Rated Power	2000W	Sensing Distance	12 ± 3cm
Ambient Temperature	0-40°C	Drying Time	7-12S
Installation	Wall Mounting	Overall size	325*310*188mm

# Note before installation:

---

## Warning

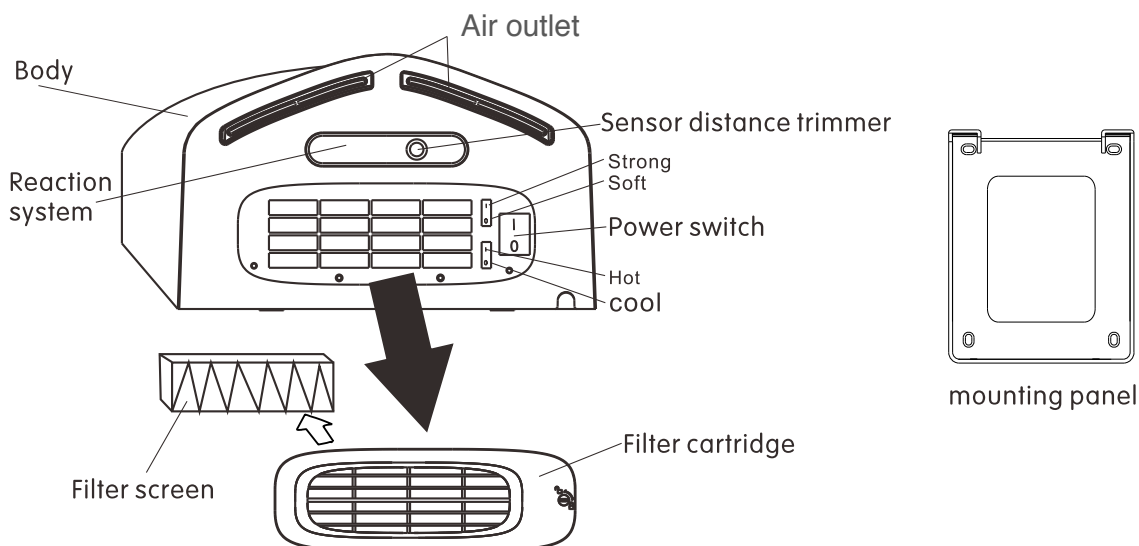
1. Do not fix in locations where the unit is likely to be splashed by excessive water in order to avoid electric shock.
2. You must commission a professional electrician to install or else it has electric shock hazard.
3. You must cut off power before installation and maintenance.
4. Do not dismantle, repair or make alterations to this machine without authorisation, otherwise there is a risk of electric shock, fire and other accidents.

## Attention

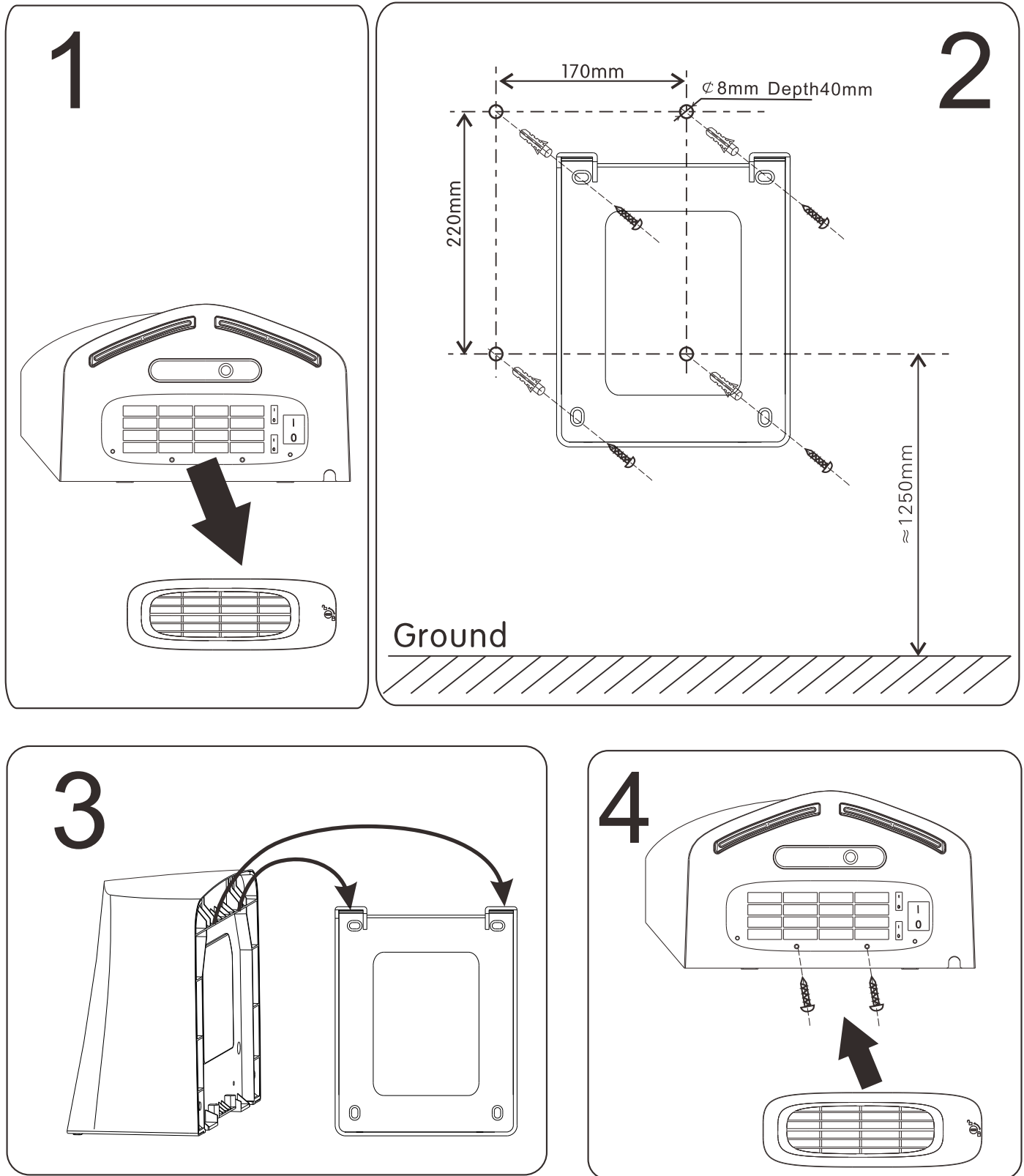
1. Do not install it above stainless steel or other shining surface location, otherwise prone to misoperation.
2. The body should be firmly fixed to the smooth wall to avoid injuries caused by the decline of product or product damage.
3. Do not install the products in such place with corrosive or flammable gases or objects, it may cause fire or product failure and malfunction.
4. Do not install the products in such environment with multi dust or in high temperature, it may cause product damage.

# Components Name:

---



# Method of Installation:



# Cleaning of Filter cartridge:

---

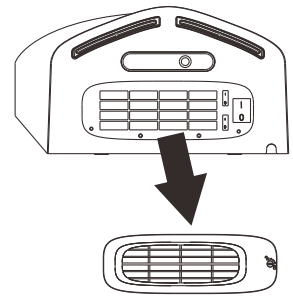
**Attention**

Attention: If the air flow becomes weaker, please clean the filter screen. Do not use water.

---

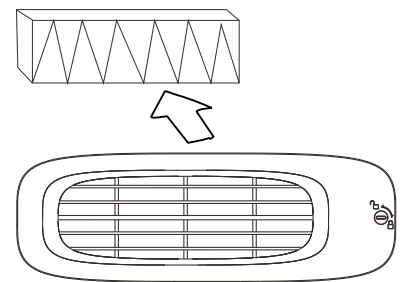
1

Unlock the filter screen and use the ridge in the middle of the filter cartridge to pull and remove.



2

Get the filter from the filter cartridge.



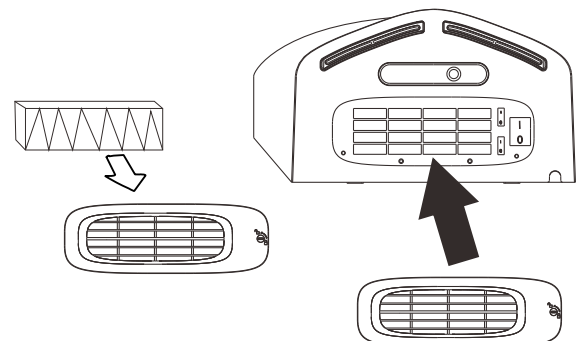
3

Clean the dust on the filter, do not wash. If there is too much dust, please replace its filter.

---

4

Put the filter at the right position in the filter cartridge, and insert the filter cartridge into the body.



# Maintenance:

---

1. Please cut off the power and clean the shell with natural detergent when it is dirty. The acid and alkalescent bathroom detergent and BEN, lacquer thinner, abrasive, etc. are forbidden. Also, do not use nylon brush to avoid scratching;
2. When cleaning the shell prevent the water droplets getting into the machine so as to avoid electric shock or short circuit;
3. It's better to cut off the power when off duty to extend the service life;
4. If the power cord is damaged, it should be replaced by the manufacturer, its service agents or similar qualified person;
5. If the machine breaks down, cut off the power; please commission a professional to repair it.

# Terms of guarantee:

---

1. The product guarantee period is 3 years.
2. The guarantee period for products came into effect from the date of buying the machine.
3. The following are not covered by the guarantee:
  - ◆ Improper use and the fault caused by demolition, alteration and repair by technical persons without our company authorisation.
  - ◆ Fires, earthquakes, thunder and other natural disasters causing faults, and abnormal voltage.
  - ◆ The faults caused by non matching power.
  - ◆ The faults caused by long time operation in bad working condition.



Intelligent Facility Solutions Ltd  
Electric Works  
3 Concourse Way  
Sheffield  
S1 2BJ

+44 (0)114 354 0047  
service@ihdryers.co.uk  
intelligenthanddryers.com