




OPERATION

Paper towels are manually withdrawn through dispensing slot and feed properly until depleted. Unit will continue to feed towels properly when correctly reloaded with a partial load in place. User activates dryer by placing hands in the sensor zone indicated by graphic on door. Drying time is automatically initiated as long as movement is sensed up to a maximum of two (2) minutes to prevent accidental hold-on. Dryer automatically shuts off after time-out when hands are removed from the sensor zone. Refill dispenser by unlocking door and replacing towels for an empty or partially empty unit. Dispenser supply is replenished and waste container is emptied manually on cycles determined by maintenance needs. Locking full-face door over compartments prevents unauthorized access or removal. Full cover and spring-hinge flap door on WR prevents unsightly overloads.

WARRANTY

One year on cabinet, 5 years on hand dryer (first year parts & labour, remaining 4 years parts only). Please refer to our website to view our full warranty statement: www.asijdmacdonald.com.au

 All ASI JD MacDonald accessible compliant products when installed must be in accordance with AS1428 to ensure the specified product is complying with all washroom specification requirements.

ASI JD MacDonald reserves the right to, and does from time to time, make changes and improvements in design and dimensions. The photographs and line drawings of the products in this flyer are representational only. All dimensions are in millimetres unless otherwise stated.

FEATURES

Recessed Combo Three-in-One Paper Towel Dispenser with Waste Receptacle and Automatic Electric Hand Dryer shall hold and dispense 500 standard multi-fold or 400 standard C-fold paper towels and shall have a waste capacity of 26 L. Dispensing of multi-fold or C-fold paper towels shall not require an additional adapter. Cabinet, door, dispenser and waste receptacle (WR) shall be type 304 stainless steel alloy 18-8. All exposed surfaces shall have satin finish and shall be protected during shipment by PVC film easily removable after installation. Cabinet shall be 20 gauge with a 16mm wide perimeter trim to lay flush against wall and shall have no exposed fastening devices or visible seams. Full-face door shall be 18 gauge, fabricated from one piece with no miters or seams on face and shall have 13mm square returns to the wall. Door shall be attached to cabinet body with a full length 4.8mm diameter stainless steel multi-staked piano hinge and shall be held closed with two (2) tumbler locks keyed alike to other ASI JD MacDonald washroom equipment. Towel dispensing slot shall have a fully hemmed-in rolled edge for snag-free dispensing and user safety. WR shall have piano-hinge mounted closed top with spring-hinge closed flap door and hemmed edges for safety. Structural assembly of all cabinet components shall be of welded construction. Hand Dryer shall operate automatically from IR sensor that shall activate dryer when hands are placed in sensor zone. Complete dryer specifications and warranty information is contained in the Model № 10-0199 Specification Sheet. Complete dryer Owner's Manual (OM) and Installation Guide (IG) shall be provided with unit.

INSTALLATION

Unit is mounted in wall recess using № 10 (M5) self-tapping screws (by others) through concealed mounting holes provided. Recommended mounting height of 1397mm to centerline of towel dispenser slot requires top of Rough Wall Opening (RWO) to be 1823mm AFF. See unit diagram for electrical service cable rough-in location. Electric service of 220-240VAC 20A 50/60 Hz (provided by others) is brought to RWO at location indicated on diagram and is hooked up (by others) in accordance with schematic and OM & IG provided with unit. Dryer is mounted to chassis wiring box with four (4) 1/4-20 pan head screws (provided) through bushings in heavy-duty back plate. Electrical service is connected (by Electrician) prior to installing cover. Cover is secured to back plate with recessed socket-pan-head tamper-resistant pin-hex bolts (supplied) with security pin-hex driver (supplied). Note that top of RWO is 1/2" (13) below top of unit. ***The unit must be at 100mm from the finished floor level to comply with Australian Disabled Standards 1428.1 & 1428.2.**

SPECIFICATION

- Electrical Supply: AC, 220–240V 50/60Hz, 1000 Watt, 3-4A
- Motor: 500 Watt, Brush Type, Dual Ball Bearings
- RPM: 22,000 - 29,000 (adjustable)
- Element: 275-500 Watt (adjustable)
- Air Speed: 199 – 296 km/hr (adjustable)
- Noise Level: 60.5 – 67.2 dB-A @2M
- Drying Time: Approx. 15 seconds
- Weight: 27kg (Shipping)
- Electrical Safety Requirements: AS/NZS 60335.2.23:2004
- Protection Category: IP24

FINISH

Satin finish stainless steel 304 grade.

ROUGH WALL OPENING (RWO)

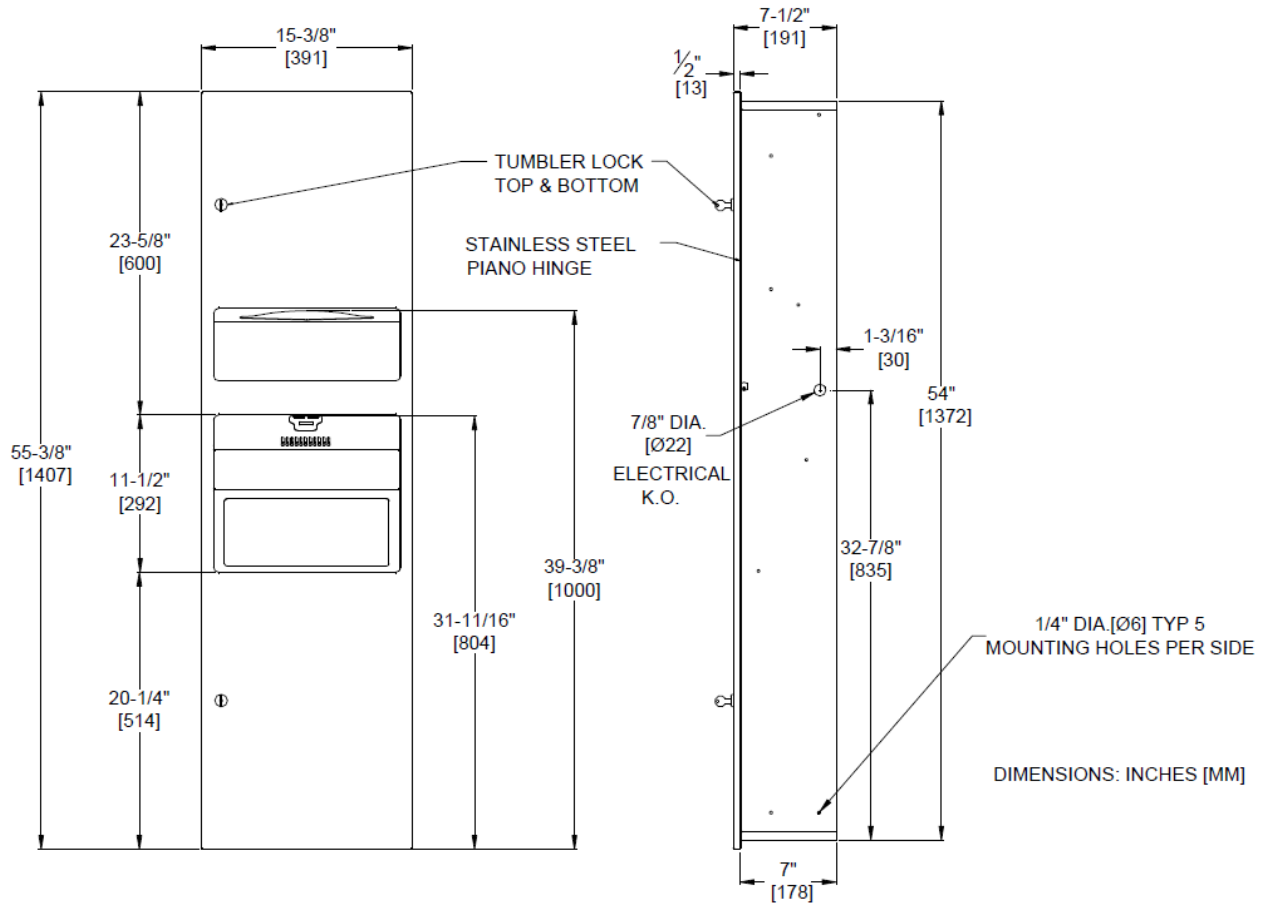
358mm (W) x 1381mm (H) x 184mm (D).

OPTIONS

- 10-764672-SR3-5 small cavity trim for semi recessed installations.
- 10-764672-SM trim for surface mount installations.

Turbo 3in1 shall be Model No. 10-64672-2 as manufactured by ASI JD MacDonald.

Turbo 3 in 1
Accessible Compliant
Model No. 10-64672-2



ASI JD MacDonald reserves the right to, and does from time to time, make changes and improvements in design and dimensions. The photographs and line drawings of the products in this flyer are representational only. All dimensions are in millimetres unless otherwise stated.