

# DryFlow Elite Mk II

POLISHED  
CHROME  
DF05M2PC

WHITE  
DF05M2W

BLACK  
DF05M2B

## WASHROOM TRAFFIC

Suitable for all locations up to extreme traffic (>500).

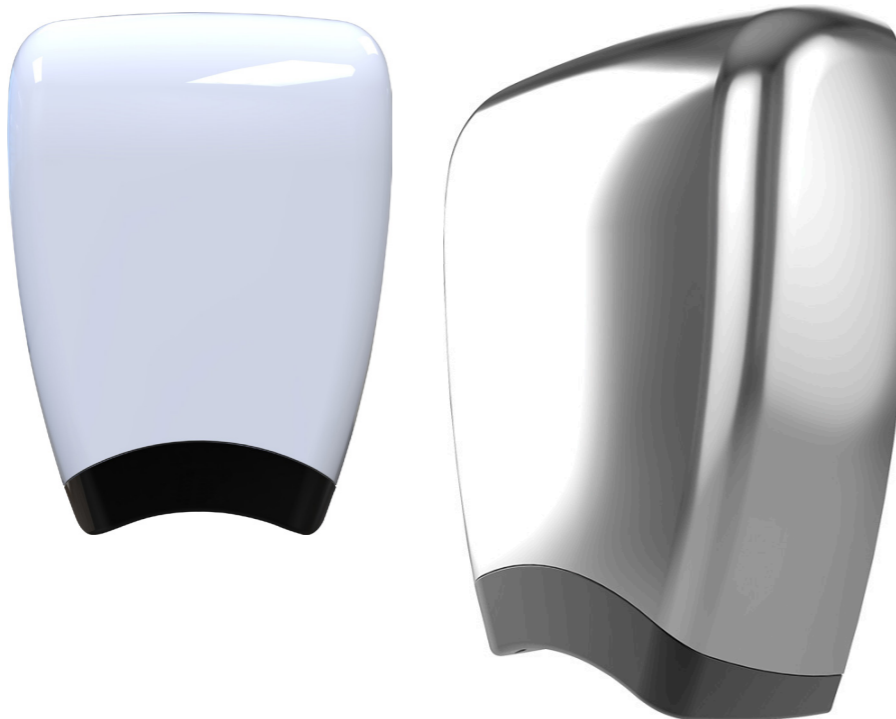
## SUITABILITY

Offices, schools, Children's attractions, churches, libraries, disabled washrooms.

## PRODUCT DESCRIPTION

The Dryflow Elite Mark II has stayed true to the virtues of original design (DF05 still available), retaining long life, quiet performance and a slim line appearance. It has further reduced the overall size, energy consumption and altered the physical design into one of the most stylish and contemporary available.

The Mark II again adheres to American disabilities act (ADA) requirements, which focus on maximising mobility space in disabled bathrooms. The quiet performance and wide airflow are other reasons why it is an appropriate product for disabled washrooms. The motor has one of the longest life spans in the industry making it suitable for all locations, however we must stress that the dry time (20-25 seconds) is good without being ultra-fast, therefore more units may be needed in high traffic locations. The energy consumption is low at approximately 6 watts per dry. The mark II is therefore an improvement on the original in every respect except from being not quite as robust.

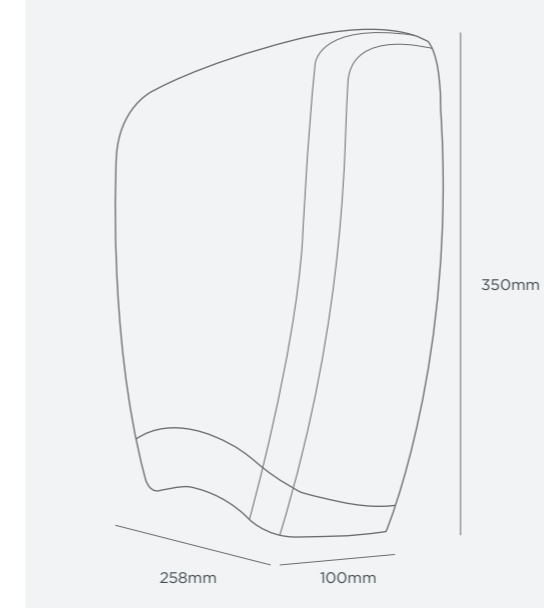


## TECHNICAL DESCRIPTION

Die Cast aluminium body available in polished chrome and black or white and black finish. Safety grill over air outlet prevents foreign objects being pushed inside the dryer. 10cm depth from wall complies with ADA requirements.

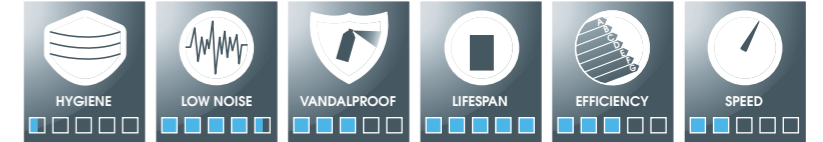
A steel back plate and anti-tamper screws provides added security. Extended 6500 hour brush life with motor tested up to 17,000 hours before failure, which is up to 17 times longer than the industry standard.

## DIMENSIONS



## RECOMMENDED INSTALLATION HEIGHTS (from the floor to the air outlet)

Men	1170mm
Women	1120mm
Children aged 4-7	810mm
Children aged 7-10	910mm
Children aged 10-13	1020mm
Children aged 13-17	1120mm
Disabled	940mm



## TECHNICAL SPECIFICATION

Input voltage:	230-240 V 50/60Hz
Rated power:	1kw
Dry time:	20-25 seconds
Energy per dry:	6 Wh
Motor type:	Universal brush (150 watts)
Motor speed:	8200 rpm
Air speed:	27 m/s - 60 mph
Air volume:	125m <sup>3</sup> /h
Operating sound level:	67-71 dB(A) @ 1 metres
Operating temp range:	47°C @ 20°C room temperature
Heater element power:	850 watts
Standby power consumption:	< 1 watt
Motor cut off time:	90 seconds
Ip rating:	IP23
Motor class:	E
Sensor type:	dual IR
Materials:	Die-cast aluminium
Finishes available:	White, black, or chrome
Guarantee:	5 years
Net weight:	3.4 kg
Packed weight:	3.6 kg
Product dimensions :	H350 x W258 x D100 mm
Packaging dimensions :	H380 x W310 x D140 mm
Certification:	CE

## MEASUREMENT DETAILS

